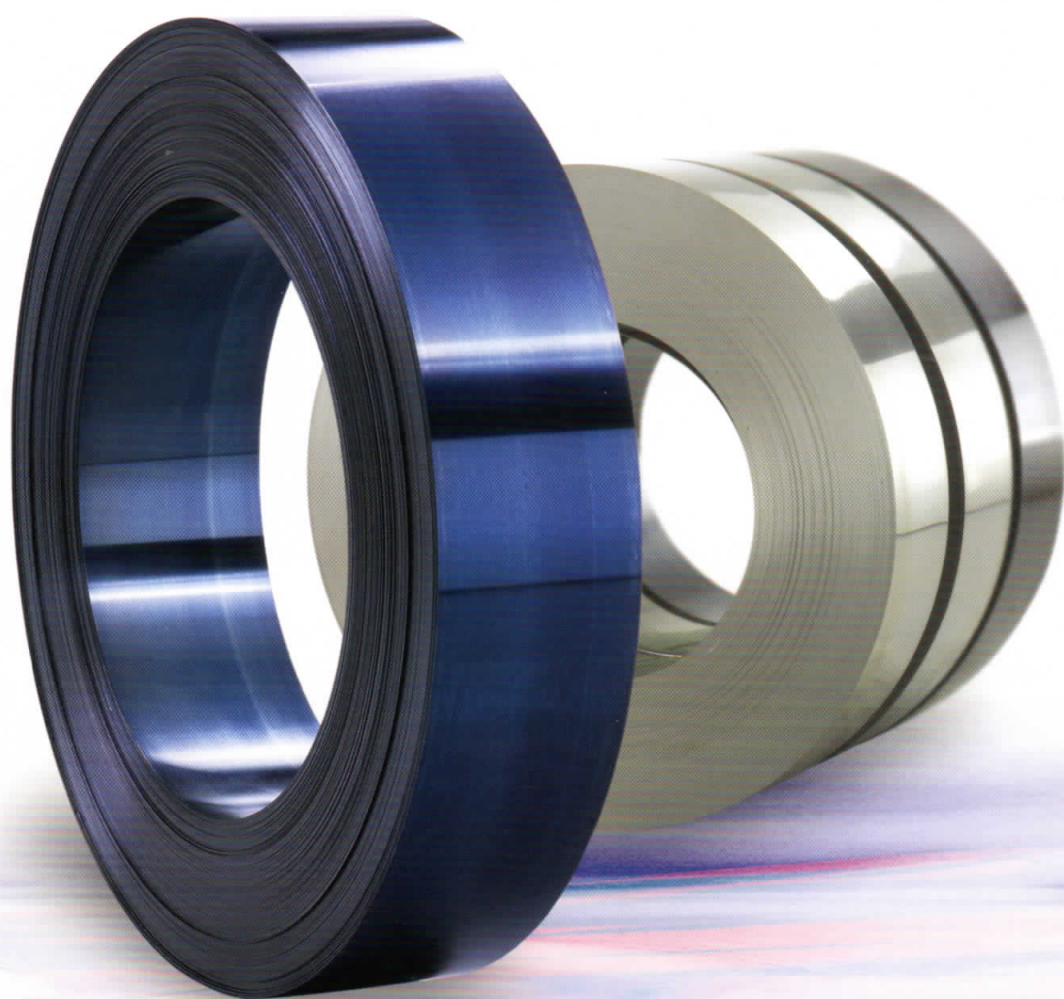


磨光特殊帶鋼。

淬硬鋼帶。



ISO 9001 : 2000  
認證取得。



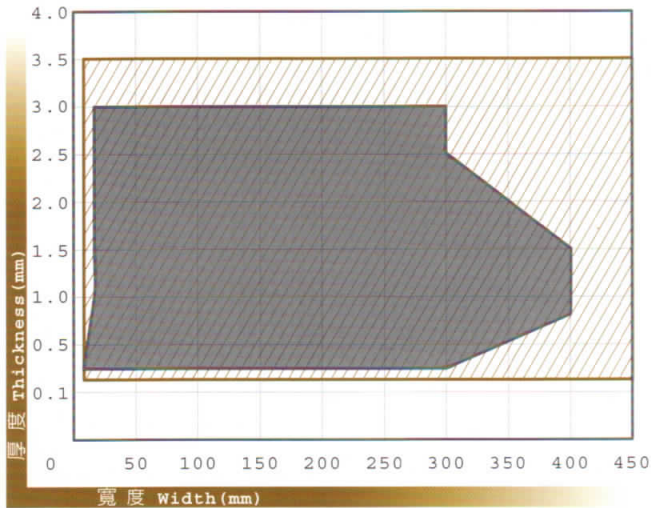
台中市工業區工業 35 路 52 號 NO. 52, 35TH RD. TAICHUNG INDUSTRIAL PARK, TAICHUNG, TAIWAN  
WWW.KUNNCHUAN.COM TEL: +886-4-2359-7372 FAX: +886-4-2359-6465 E-MAIL: SALES@KUNNCHUAN.COM

**KUNN CHUAN**

崑銓企業股份有限公司  
KUNN CHUAN ENTERPRISE CO., LTD.

生產鋼種 Types Of Steel : S50C、SK65 ~ SK105、SKS5、SKS51。

生產規範 Specification : JIS G3311 標準



磨光特殊帶鋼生產尺寸 :

厚度 ( T ) : 0.2 mm ~ 3.5 mm X 寬度 ( W ) : Max 914 mm (以內)。

COLD ROLLED SPECIAL STEEL STRIP Product Dimension & Hardness:

Thickness( T ): 0.2mm-3.5mm X Width( W ): max 914mm.

淬硬鋼帶生產尺寸 :

厚度 ( T ) : 0.3 mm ~ 3.0 mm 寬度 ( W ) : 8 mm ~ 400 mm (以內)。

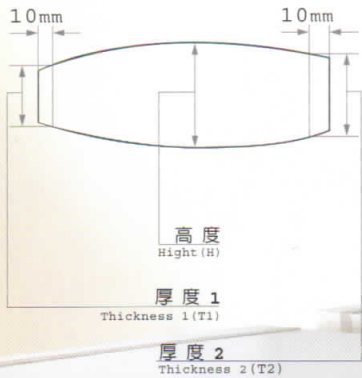
熱處理硬度 : HV450 Max.HV650 ( 可依客戶要求指定硬度、拋光、發藍、倒角。 )

HARDENED & TEMPERED STEEL STRIP Product Dimension & Hardness:

Thickness( T ): 0.3mm-3.0mm Width( W ): 8mm-400mm.

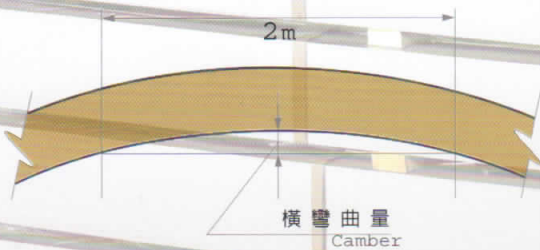
Hardness Through Heat Treatment: HV450 Max.HV650. (Customized Hardness, White Polished, Blue Polished & Trimmed Edge Also Available Upon Request.)

尺寸許可差 Dimension Tolerance :



厚度 Thickness	厚度許可差 Thickness Tolerance	寬度許可差 Width tolerance	
		寬 < 200 mm Width	200 mm ≤ 寬 < 500 mm Width
0.30 mm ≤ 厚 (T) < 0.40mm	±0.020 mm	±0.15 mm	±0.25 mm
0.40 mm ≤ 厚 (T) < 0.60mm	±0.025 mm	±0.15 mm	±0.25 mm
0.60 mm ≤ 厚 (T) < 0.90mm	±0.030 mm	±0.20 mm	±0.30 mm
0.90 mm ≤ 厚 (T) < 1.20mm	±0.040 mm	±0.20 mm	±0.30 mm
1.20 mm ≤ 厚 (T) < 1.60mm	±0.050 mm	±0.25 mm	±0.40 mm
1.60 mm ≤ 厚 (T) < 2.10mm	±0.055 mm	±0.25 mm	±0.40 mm
2.10 mm ≤ 厚 (T) < 3.00mm	±0.065 mm	±0.25 mm	±0.40 mm
3.00 mm ≤ 厚 (T) < 3.20mm	±0.080 mm	±0.25 mm	±0.40 mm

橫彎許可差 Straightness Tolerance :



寬度 Width	橫彎許可差 Straightness Tolerance
寬 (W) < 10 mm	15 mm/2M
10 mm ≤ 寬 (W) < 30mm	10 mm/2M
30 mm ≤ 寬 (W) < 50mm	8 mm/2M
50 mm ≤ 寬 (W) < 80mm	6 mm/2M
80 mm < 寬 (W)	4 mm/2M

用途 Applications :

機械配件、纖維機械器具、事務用機器、簡易金型(湯姆遜刀)、各類刀具、電器、建築土木工具、手工具、汽車零件、傢具及裝飾品。

Applications : Machine Parts, Knitting Machine Parts, Office Machine Parts, Steel Cutting Rules, Cutting Tools, Electrical Appliance, Construction Tools, Hand Tools, Auto parts, Furniture Parts & Accessories.